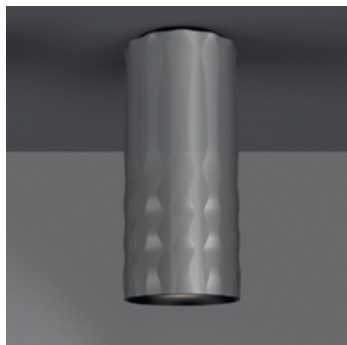


## PRODUCT DATA SHEET

### Fiamma Ceiling 30 - Grey



#### DESIGN BY:

Wilmotte & Industries  
2015

#### MATERIALS:

Texturized anodized aluminium lamp body / transparent injection-moulded polycarbonate diffuser

#### DESCRIPTION:

"Modular and adjustable, Fiamma works with a LED source base and a set of accessories to meet the different needs of lighting in hotels: bedside lamp, floor lamp, wall lamp, suspension light. The look is willing to be « domestic », to feel like being at home, in order to reinforce the cosines of the object." Fiamma is a systemic lighting element designed to respond to the needs of the contract sector, yet well suited also for everyday living environments. An anodized aluminium cylinder with a specific texture – a perfect combination of look and functionality – is the true luminous engine of the system. The light emitted by the LED source is cleverly controlled by a transparent diffuser, designed with an anti-reflex texture, to ensure visual comfort in all usage conditions. Different supports can be assembled on it, all made of carefully processed aluminium, to obtain a variety of versions – suspension, ceiling, reading, table.

#### SELECT

LED

Grey

#### PRODUCT CODE

1989010A

#### Light emission

IP20

Dimmable

#### TECHNICAL DATA SHEET

#### FEATURES

Product name:	Fiamma Ceiling 30 - Grey
Article Code:	1989010A
Colour:	Grey
Material:	Texturized anodized aluminium lamp body / transparent injection-moulded polycarbonate diffuser
Series:	Design

#### DIMENSIONS

Height:	cm 31
Diameter:	cm 13

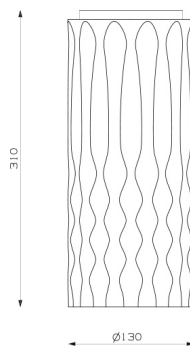
#### LAMPS INCLUDED

Category:	LED
Watt:	28W
Luminous Flux (lm):	1526lm
Color temperature (K):	3000K
Class:	A

#### LUMINAIR

Watt:	28W
Luminous Flux (lm):	1526lm
CCT:	3000K

#### DIMENSIONS



#### COLOUR

