

PRODUCT DATA SHEET

Reeds Indoor



Seven flexible stems work as light tubes for the LEDs located at its base, creating a picturesque lighting trail. Materials: base in painted aluminium; lamp body in transparent polycarbonate covered with a body-tinted plastic cover; stems in transparent PMMA. Specification: the shape of the base allows modular installations and multiple customized configurations.

Anthracite Grey

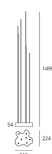


LED Floor

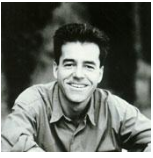
750° IP20



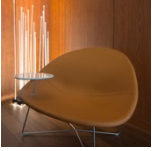
W	Dimensions	Luminous Flux (lm)	Color	Code	Product name
9,5W	22x22 cm	79lm	●	T087300	Reeds IP20



Designers



Projects



Escritório
CifraSafira